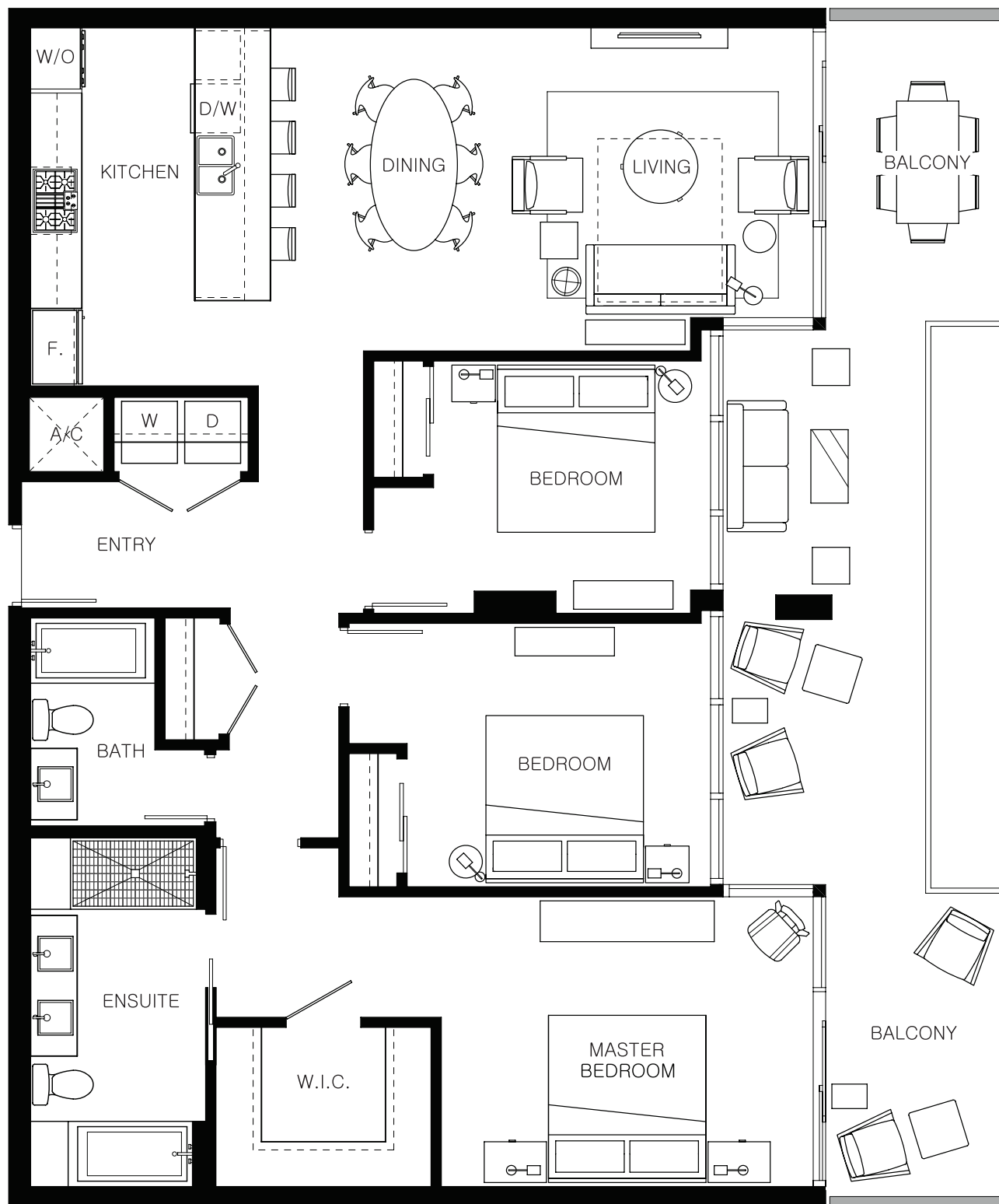


level

LOS ANGELES
Downtown - South Olive

THREE BEDROOM SKY SUITE

LIVING 1,500 SQ FT



The developer reserves the right to make minor modifications to suite and furniture layout, specifications and floor plans should they be necessary to maintain the high standards of this community. Square footage are based on preliminary measurements and are approximate. E & O.E.

EXECUTIVE THREE BEDROOM SKY SUITE

LIVING 1,840 SQ FT



The developer reserves the right to make minor modifications to suite and furniture layout, specifications and floor plans should they be necessary to maintain the high standards of this community. Square footage are based on preliminary measurements and are approximate. E & O.E.